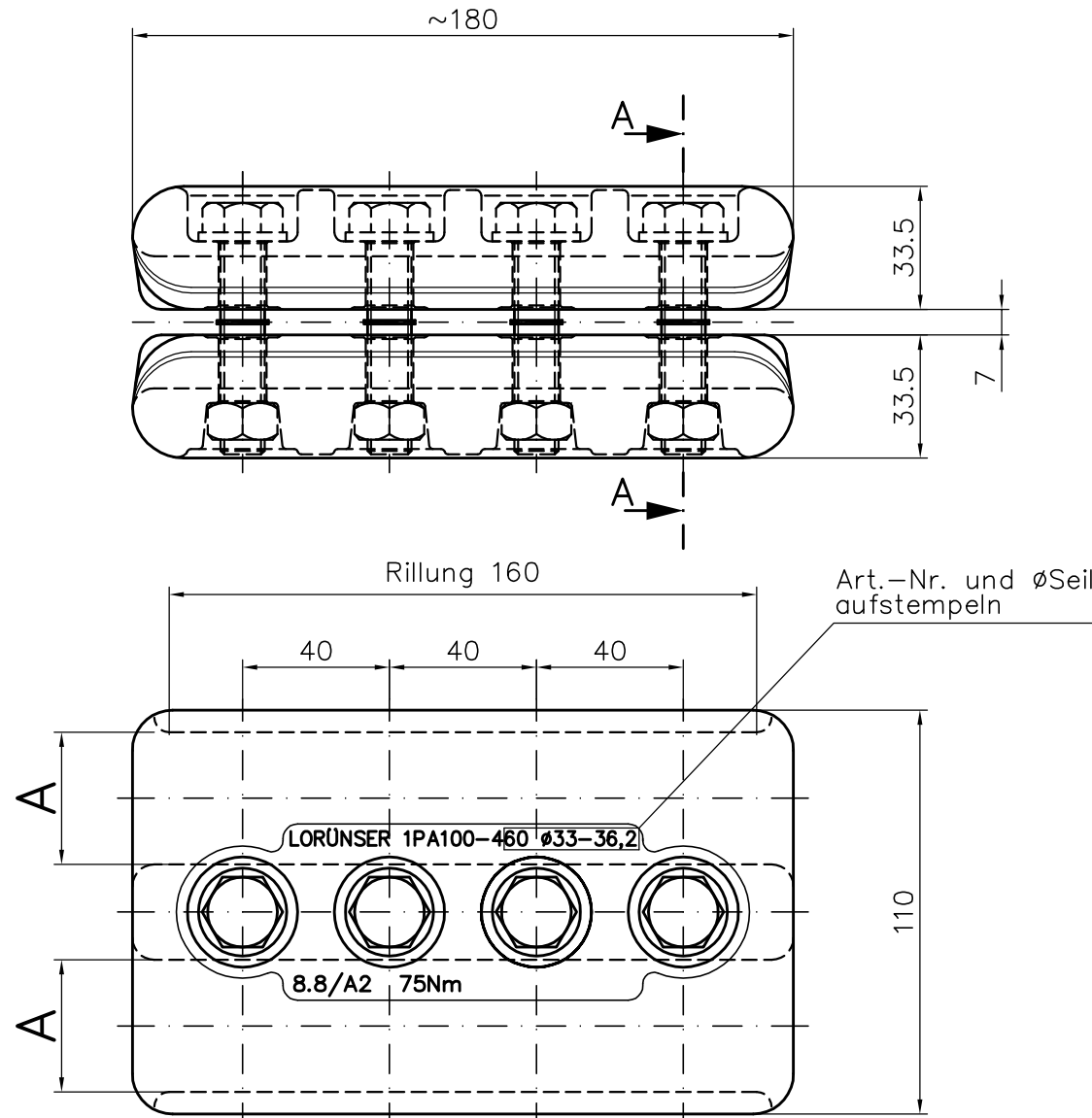


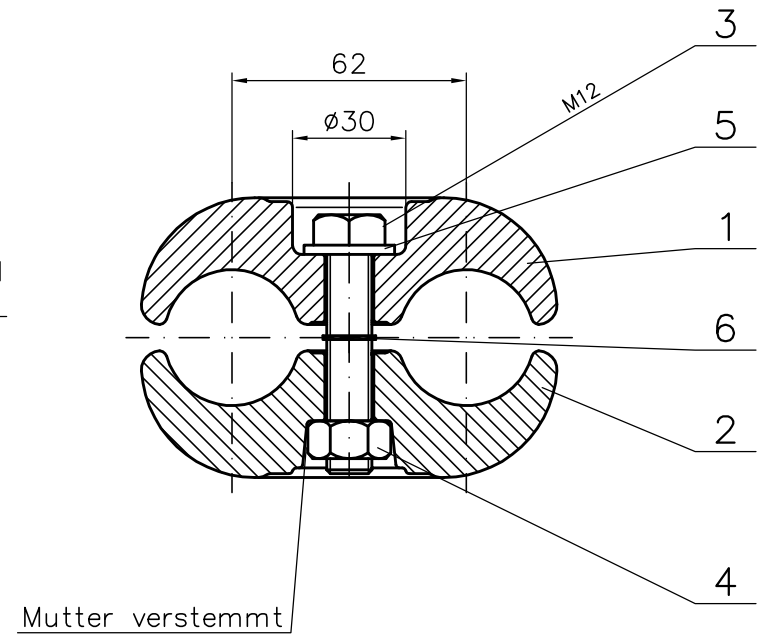
This drawing and all data contained therein is legal and intellectual property of LORÜNSER Austria GmbH and must not be altered or transmitted to any third party without our written consent.

Artikel-Nr. 1PA100-460
Article-No.

Un	420 kVAC
In	1250 A
Ith	50 kA1s
Ith	28,9 kA3s



Schnitt A-A



Forged Type
Geschmiedete Ausführung

AL-Parallel-Groove-Clamp			
Artikel-Nr. 1PA100-460			
Datum/Name Date/Name	Nr. No.	Gewicht Weight	2,5 Kg
05.01.2006 Tosetti	569	Maßstab Scale	1:2
gez. drawn	17.12.2001 Motzko S.	Werkzeuge früher	vorh. 553.27/22
gepr. appr.	17.12.2001 Motzko S.		
Bauteil-Nr. Components			

Positions-Nr. Position-No.	0651842
Projekt-Nr. Project-No.	
Änderung Revision	Datum Date
LL-Bezug LL-Reference	

Kundenprojekt Nummer Customer Project Number	ALUMINIUM TYP LLP, PARALLEL LINA-LINA
Bemerkung Comments	

A = $\varnothing 36,2$
B =
C =
D =

Datum/Name Date/Name	Nr. No.
05.01.2006 Tosetti	569

