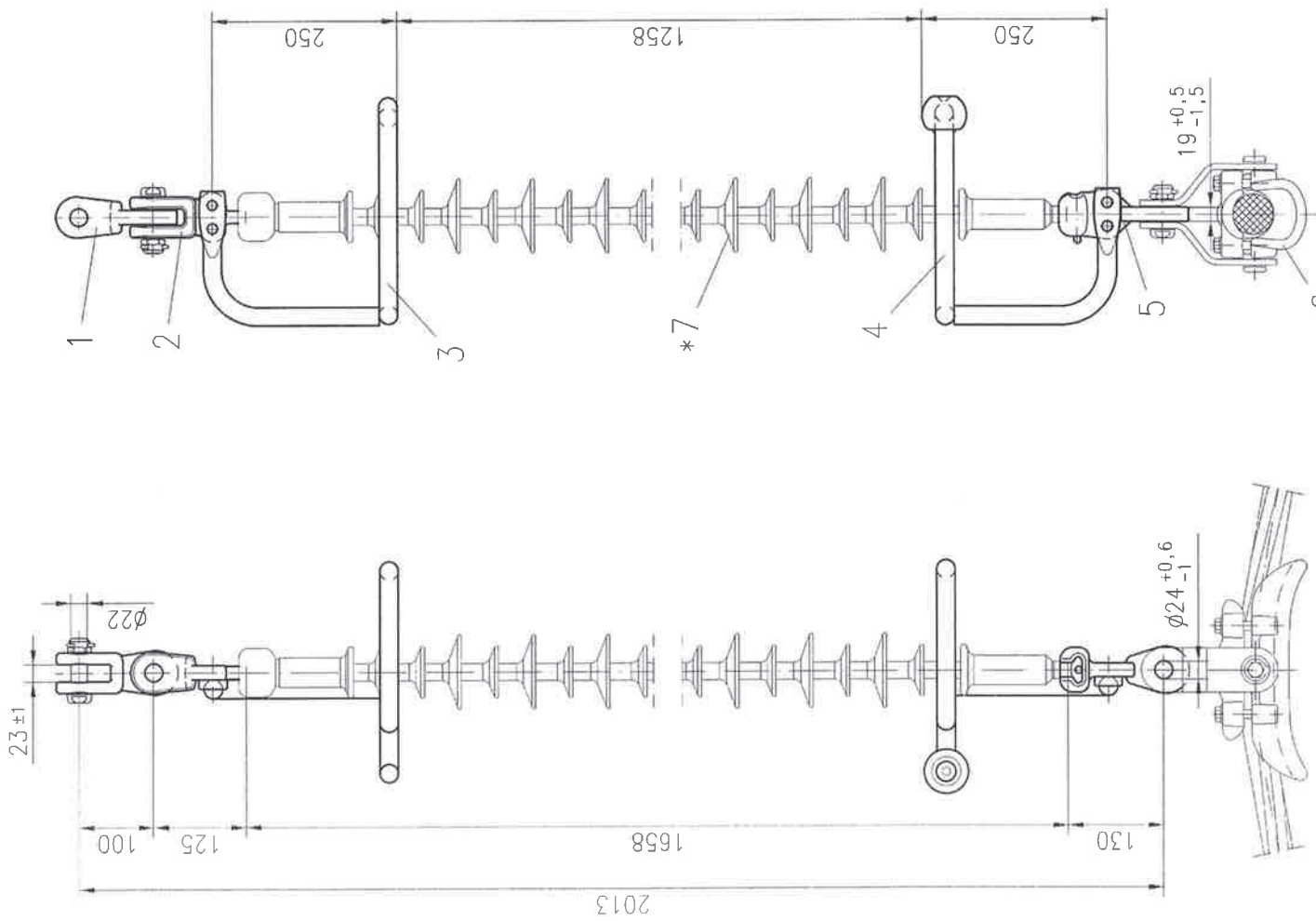


Letter			
Revision			
Date			
Name			

This page and its contents are intellectual property of Mosdorfer Company and its affiliates. All rights reserved. No part of this document may be reproduced, stored in a retrieval system, or transmitted in any form or by any means, electronic, mechanical, photocopying, recording, or by any information storage and retrieval system, without the written consent of Mosdorfer Company.

Number	
Modification	
Date	
Name	



* Insulator, Suspension clamp will be ordered seperately

*7	1	Insulator	IEC 16																
*6	1	Suspension clamp	IEC 16	F0308079	4220.301/4														
5	1	Socket eye twisted	IEC 16	F0711391/2	4760.42/2														
4	1	Lower arcing ring		F0711392/2	4760.42/3														
3	1	Upper arcing ring		F0305021	4217.32/1														
2	1	Ball clevis twisted	IEC 16	F0311067	4265.76														
1	1	Clevis eye twisted	Standard																
Item Qty		Description	Standard	Drq. no.	Art. no.	Material	Surface	Mass [kg]											
2014		Date	Name																
Drawn		23.05.	Gruber																
Checked		27.05.	Grimm																
			Title																
			170 kV Single Susp. Set																
			170 kV Single Susp. Set																
			Drq. No.																
			HS11E0427																
			Rev. Mod.																
			A3																
			No. of pages																
			Page																



Tolerance acc. to: ---- Short circuit current: 40 kA 1s Breaking load: 120 kN Mass: --- kg

Scale NTS