

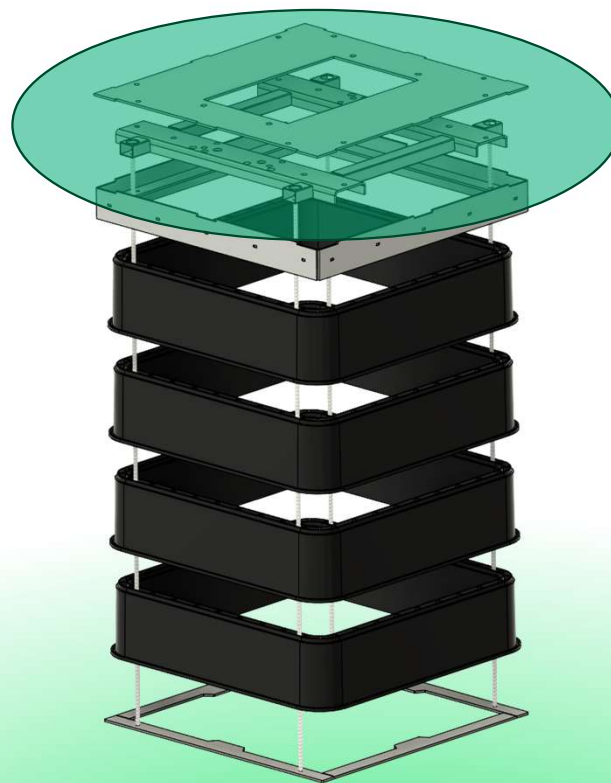
M E L
B Y
E

Simon Gullberg
Product and solution Manager



November 2025 Installation Manual

Press Nut for EV-Chargers



Installation Manual – Press Nut on reinforcement frame

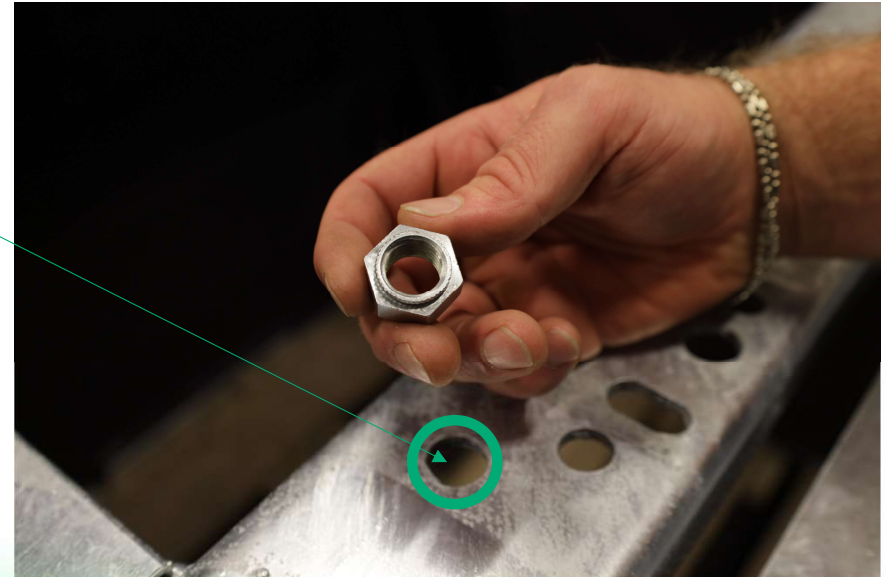
M E L B Y E

- Included: 6pcs Press Nuts M12 or M16
- On site tools: 19 or 24mm socket
- On site tools: Ratchet or Impact wrench



- **Step 1:** Position adaptor plate as template to locate holes in reinforcement frame that are intended for the EV-charger.

Reinforcement frame is delivered with pre-drilled 14mm holes for M12 press nuts



Installation Manual – Press Nut on reinforcement frame

M E L B Y E

- **Step 2:** Position press nut on the underside of reinforcement frame
- **Step 3:** Attach M12 bolt included in foundation package



Installation Manual – Press Nut on reinforcement frame

M E L B Y E

- Step 4: Use hand force to attach bolt
- Step 5: Use impact wrench or ratchet to tighten bolt and press nut 20-25Nm

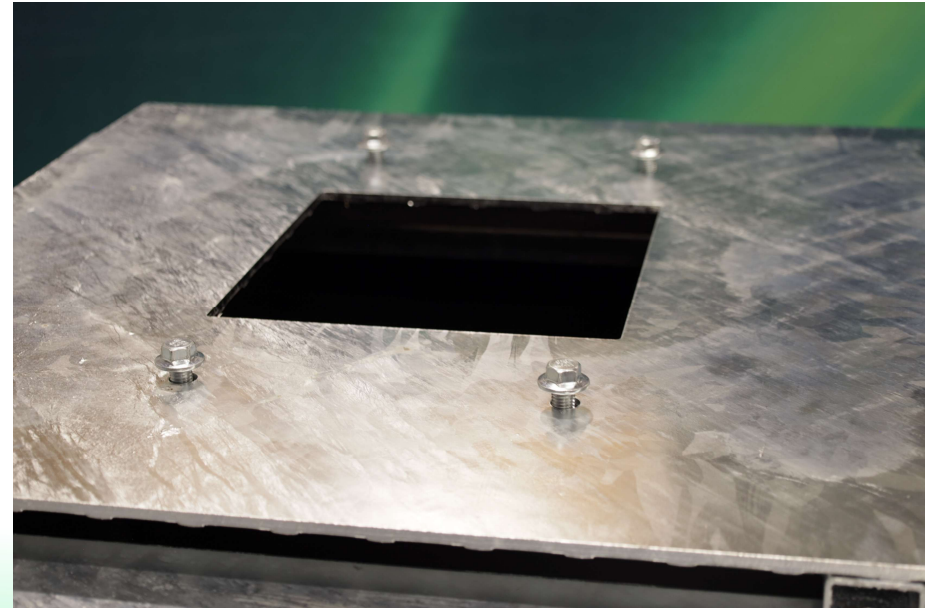


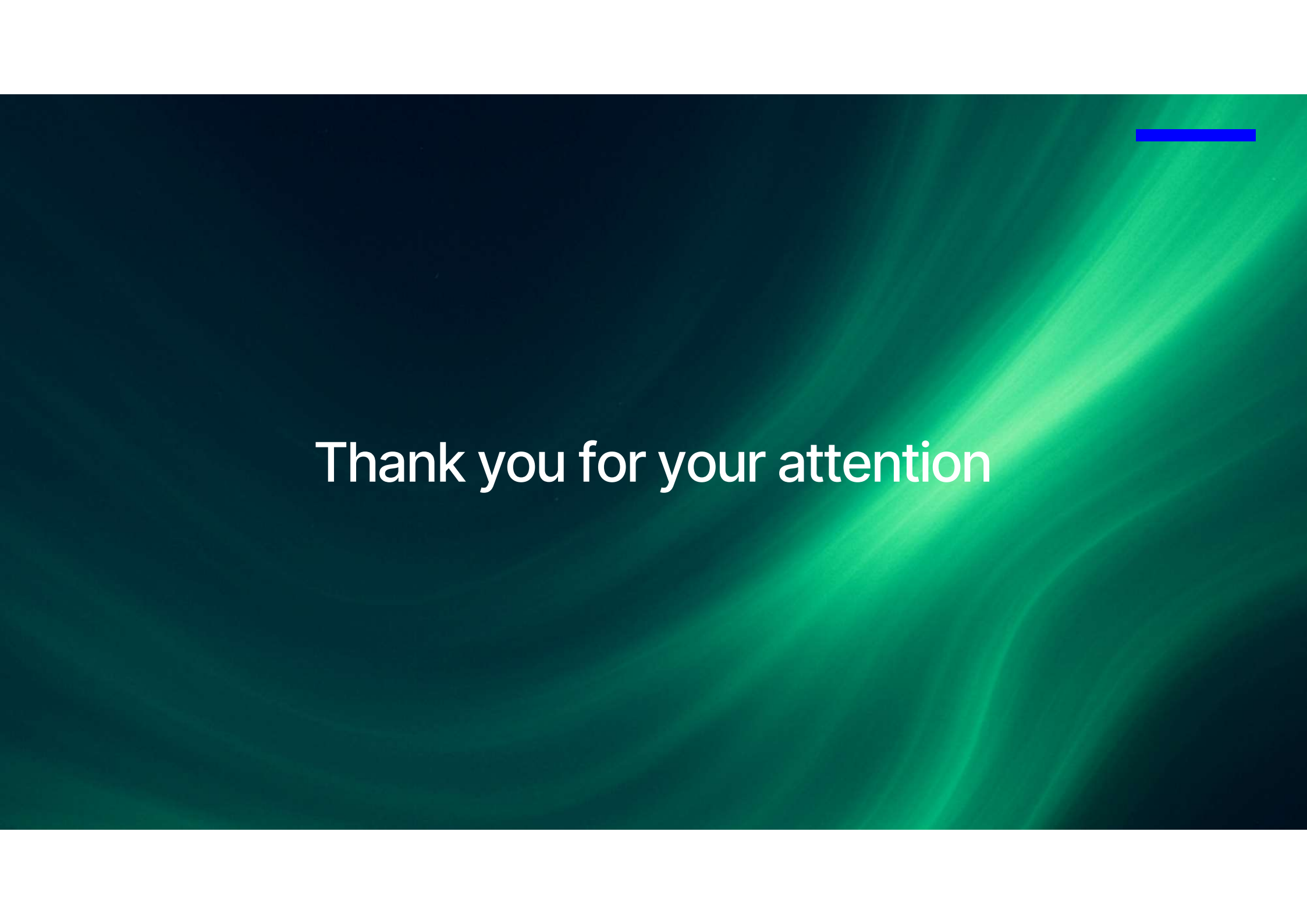
- **Step 6:** Remove bolt and you should now have a thread that can be used for mounting EV-charger on the reinforcement frame
- 40mm bolts included in package can be used



- **Step 6:** Remove bolt and you now have a thread that can be used to mounting EV-charger on the reinforcement frame
- **Step 7:** Tighten poles by inserting steel rod in holes and turn.

Press Nuts can be used several times if mounted in the wrong position





Thank you for your attention