

DIMENSIONS

According to IEC 60305

IEC designation

Diameter of shell (D)

Spacing (P)

Min. nominal creepage distance

Couplings according to IEC 60120

Approximate net weight

U70BL

255 mm

146 mm

320 mm

Size

16A

3,4 kg

MECHANICAL PERFORMANCE

According to IEC 60383

Min. mechanical failing load

70 kN

Routine Test Load

35 kN

ELECTRICAL PERFORMANCE

According to IEC 60383

Power frequency withstand voltage

70 kV

dry one minute

wet one minute

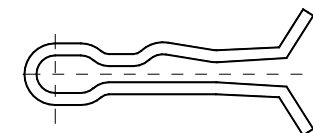
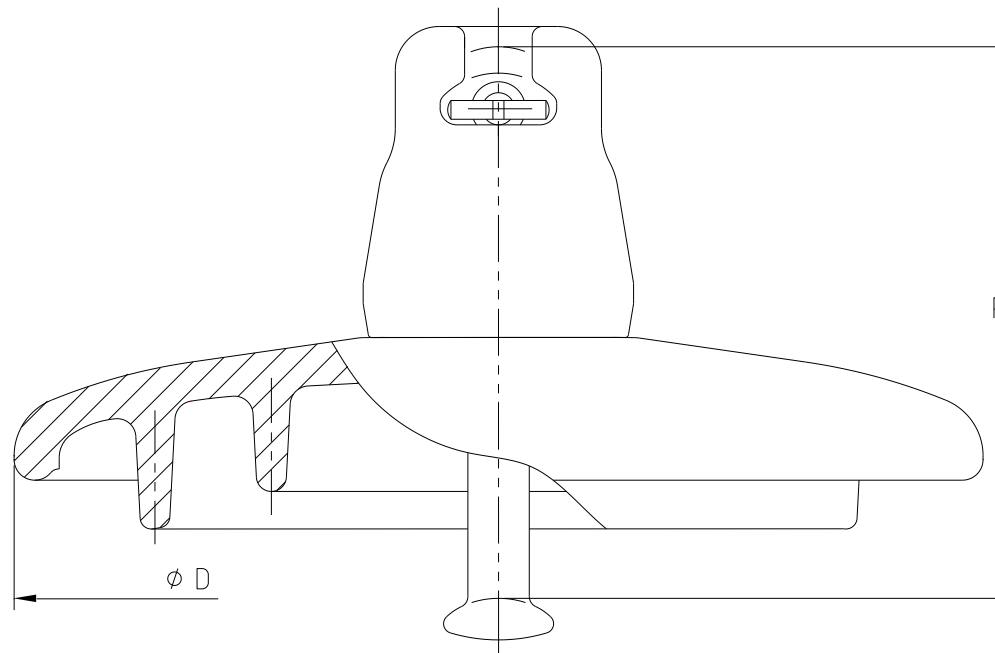
40 kV

Lightning impulse withstand voltage ±

100 kV

Withstand puncture voltage

130 kV



COMPONENT PARTS


Dielectric shell: Toughened Glass

Cap: Hot dip galvanized cast iron

Pin: Hot dip galvanized forged steel

Cotter key: Stainless Steel

Cement: Aluminous, hot cured

SEDIVER®		SEDIVER Spa Area industriale F2 CAP 83051 Nusco, Italy	
INSULATOR TYPE	F 70/146	Approved	
Drawing n°	8D81D03FEF	Issue :	Date 30/06/2020

Code:UF070CJ146C(C/F)16ANI

Drawings, sketches and other data contained in this document ("Proprietary Data") are protected by intellectual property laws and international treaty and conventions on intellectual property, and/or shall be treated as confidential information. Proprietary Data shall not be used for any purpose other than as permitted. Any reproduction or disclosure of is subject to prior and written consent. Communication of this document shall not be construed as granting any right, title, license, interest to the Proprietary Data nor as representing an intent to authorize the creation of derivative work based on the Proprietary Data. Proprietary Data as well as any copies must be returned or destroyed, on first request