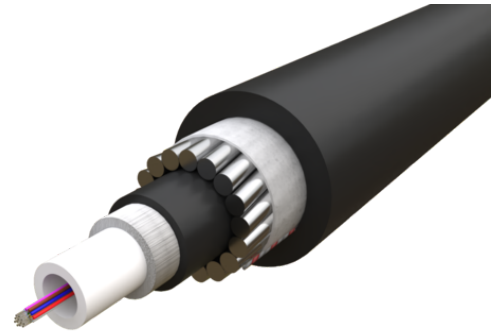


Product name	12F G657A1 CLT SWA armored 4kN Black HDPE OD 11mm 4000m/dr
Product code	87401012
Product type	BWPI
GTIN	7332811146367
ETIM-Class	EC000034



PRODUCT SPECIFICATIONS

12F G657A1 cable suitable for under water installation, direct burial and has full rodent protection. It attains its mechanical robustness and functional performance through its steel wire armour (SWA) reinforcement. Needs no further protection at under water or underground installations. The cable is based on a central loose tube construction (CLT).

The expected service life in normal use exceeds 30 years.

Measurements

Length	1 000 mm
Height	11 mm
Width	11 mm
Weight	199 g

Physical Characteristics

Fibre Count	12
Cable Construction	Central Loose Tube (CLT)
Fibre Type	ITU-T G.657 A1
Fibres per Tube	12
Fibre Colour Sequence	S12 & EIA/TIA-598A
Tube Size	3 mm
No of Tubes	1

Tube Colour Sequence	EIA/TIA-598A
Outer Sheath Material	HDPE (High Density Polyethylene)
Double Sheath	Yes
Colour of Cable Sheath	Black
Nominal Sheath Thickness	1,4 mm
No of Ripcords Below Outer Sheath	1
Cable Diameter	11 mm
Cable Diameter Tolerance	+/- 0.4 mm
Nominal Cable Weight	199 kg/km

Mechanical & Environmental Characteristics

Halogen Free	Yes
UV Proof	Yes
Metal free	No
Tensile Strength (N) IEC-60794-1-21-E1	4 000 N
Crush Resistance - IEC- 60794-1-21-E3	4 000 N/10cm
Impact Strength (Nm) IEC-60794-1-21-E4	30 Nm
Torsion IEC-60794-1-21-E7	±180°
Min. Bend Radius (During Installation) IEC-60794-1-21-E11	20 x d
Min. Bend Radius (After Installation) IEC-60794-1-21-E11	15 x d
Water Penetration Test IEC-60794-1-22-F5	1m waterhead, 3m samples, 24 h
Drip Test IEC-60794-1-21-E14	30 cm, 70°C, 24 h
Temperature Performance Installation IEC-60794-1-22-F1	-15°C till +50°C
Temperature Performance Operation IEC-60794-1-22-F1	-30°C till +70°C
Temperature Performance Storage IEC-60794-1-22-F1	-30°C till +70°C
Max Installation Depth	150 m