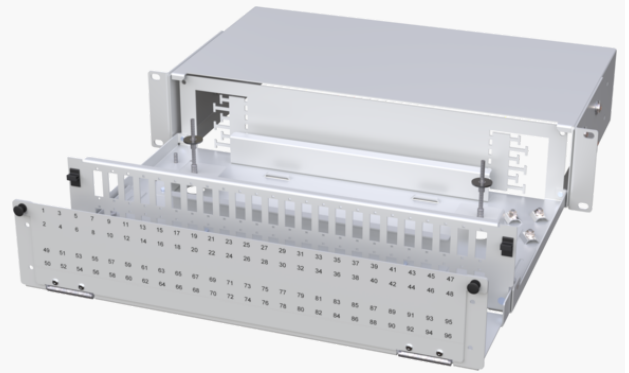


Product name	Optical Distribution Frame UHD 19" 2U 48xLCQ/SCD GRAY
Product code	5055298
GTIN	7332811377457
ETIM-Class	EC001130



## PRODUCT SPECIFICATIONS

Fiber Optic Patch Panel Ultra High Density (UHD) 1U/2U. The patch panel is made of rugged alu-zinc metal and has a durable powder-coat finish coming in light gray color. The craft-friendly fiber optic trays and an integrated fiber storage allow comfortable assembly.

- Capacity up to 144 splices (1U version)
- Capacity up to 288 splices (2U version)
- Capacity up to 72×SC/144×LC connectors (1U version)
- Capacity up to 144×SC/288×LC connectors (2U version)
- Increased corrosion resistance (alu-zinc material)
- High connector density
- Removable patchcord support
- Depth adjustable 19" mounting brackets
- Removable Fiber Optic Trays to facilitate easy installation and maintenance
- Space for a fiber storage under the Fiber Optic Trays

## Measurements

Length	349 mm
Height	88 mm
Width	483 mm
Weight	6 200 g

## Technical Specifications - ODFs

Fibre Count	192
Adapter Plate	48xLC Quad/SC Duplex
Preterminated	No
Sliding Enclosure	Yes
Mounting Type	19" rack
Number of Rack Spaces	2 U
Depth - ODF	244 mm
Depth - Front Shelf	105 mm
Colour	Light Gray RAL 7035