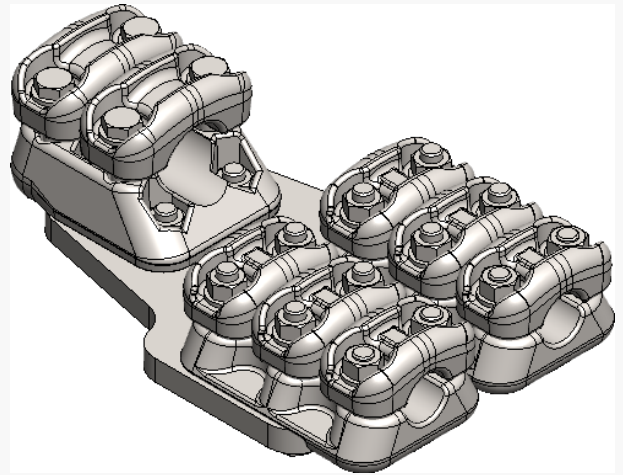


| | |
|--------------|---|
| Product name | MFK Duplex Straight 1 x 37-47mm 2D 2 x 17-37mm 3d |
| Product code | 112106 |
| Product type | MFK Duplex Rett 1x2D+2x3d |
| GTIN | 7332811350719 |
| ETIM-Class | |



Measurements

| | |
|--------|---------|
| Weight | 6 587 g |
|--------|---------|

Technical informations - Clamps

| | |
|----------------------------------|---------|
| Bolt dimension / number mm / pcs | m12 |
| Weight | 6 587 g |
| Load In | 1000 A |
| Max Rated Voltage Un | 245 kV |
| Short Circuit Current kA 1s | 50 kA |

Load / Tension Data

| | |
|-------------|-------|
| Wrench Size | 19 mm |
| Torque | 75 Nm |

Specifications

| | |
|-------------------------|-----------|
| Conductor Diameter Main | 37-47 mm |
| Conductor Diameter Tap | 17-37 mm |
| Hole Diameter d | 17-37 mm |
| Hole Diameter D | 37-47 mm |
| Number of Caps | 1x2d+2x3d |

