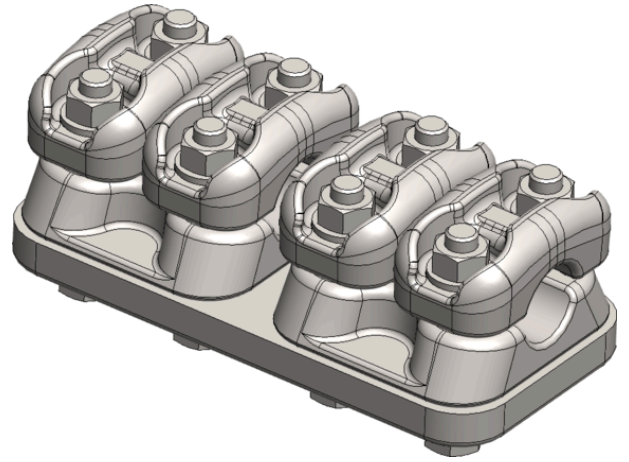


<b>Product name</b>	MFK R-substation connector 2d+2d 17-37mm/17-37 mm
<b>Product code</b>	110101
<b>Product type</b>	MFK R 2d+2d
<b>GTIN</b>	7332811350115
<b>ETIM-Class</b>	



## Measurements

<b>Length</b>	210 mm
<b>Height</b>	88,5 mm
<b>Width</b>	100 mm
<b>Weight</b>	3 180 g

## Technical informations - Clamps

<b>Bolt dimension / number mm / pcs</b>	m12
<b>Weight</b>	3 180 g
<b>Material</b>	klemmekropp i smidd aluminium bolter a2
<b>Load In</b>	800 A
<b>Max Rated Voltage Un</b>	245 kV
<b>Short Circuit Current kA 1s</b>	50 kA

## Load / Tension Data

<b>Wrench Size</b>	19 mm
<b>Torque</b>	75 Nm

## Specifications

<b>Conductor Diameter Main</b>	17-37 mm
--------------------------------	----------

<b>Conductor Diameter Tap</b>	17-37 mm
<b>Hole Diameter d</b>	17-37 mm
<b>Hole Diameter D</b>	37-47 mm
<b>Number of Caps</b>	2+2