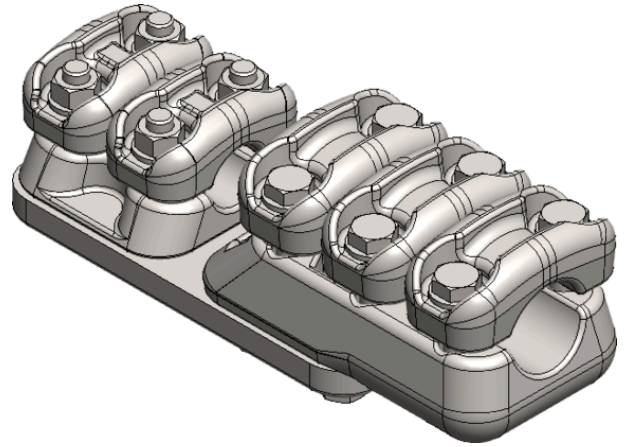


| | |
|--------------|--|
| Product name | MFK R-substation connector 2d+3D 17-37mm/37-47mm |
| Product code | 110105 |
| Product type | MFK R 2d+3D |
| GTIN | 7332811341120 |
| ETIM-Class | |



Measurements

| | |
|--------|---------|
| Weight | 4 540 g |
|--------|---------|

Technical informations - Clamps

| | |
|----------------------------------|---|
| Bolt dimension / number mm / pcs | m12 |
| Weight | 4 540 g |
| Material | klemmekropp i smidd aluminium bolter a2 |
| Load In | 800 A |
| Max Rated Voltage Un | 245 kV |
| Short Circuit Current kA 1s | 50 kA |

Load / Tension Data

| | |
|-------------|-------|
| Wrench Size | 19 mm |
| Torque | 75 Nm |

Specifications

| | |
|-------------------------|----------|
| Conductor Diameter Main | 37-47 mm |
| Conductor Diameter Tap | 17-37 mm |
| Hole Diameter d | 17-37 mm |
| Hole Diameter D | 37-47 mm |

| | |
|----------------|-----|
| Number of Caps | 2+3 |
|----------------|-----|